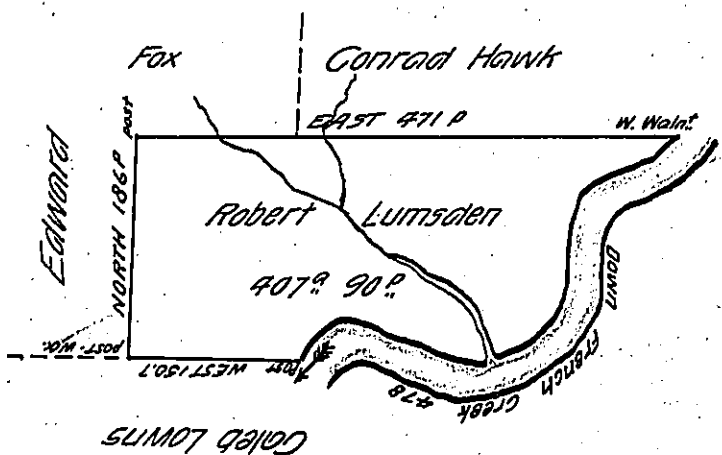


River Courses

- S 74 W 82
- S 30 W 20
- S 2 1/2 W 90
- S 23 1/2 W 20
- S 81 W 14
- S 24 W 19
- S 32 W 14
- S 46 W 17
- S 85 1/2 W 14
- West 12
- N 89 W 30
- N 68 W 100
- S 47 3/4 W 46
- 478 P.



Situate on and adjoining the west side of French Creek in Allegheny County containing 407<sup>90</sup> and 90 perches and allowance of six p cent for roads &c surveyed the 6<sup>th</sup> day of October 1794 in pursuance of a warrant dated the 13<sup>th</sup> Ap<sup>l</sup> 1792

To: Don<sup>l</sup> Brodhead Esq<sup>r</sup>  
 Surveyor General

W<sup>m</sup> Power D<sup>x</sup> S<sup>r</sup>

IN TESTIMONY that the above is a copy of the original remaining on file in the Department of Internal Affairs of Pennsylvania, made conformably to an Act of Assembly approved the 16th day of February, 1833, I have hereunto set my Hand and caused the Seal of said Department to be affixed at Harrisburg, this fourteenth day of September 1905

*Loach P. Brown*  
 Secretary of Internal Affairs.